

Abverkauf

RANCHO Stossdämpfer, Lenkungsdämpfer

RS 5000er und RS 9000er

Fahrwerk, Dämpfer



RANCHO Dämpfer/ Lenkungsdämpfer

RS5000 Dämpfer seit 1985 einer der beliebtesten Dämpfer für Allrad Fahrzeuge

**Die vor allem im Off-Road stark geforderten Dämpfer verbinden die Vorteile eines Öldruckdämpfers mit den Vorteilen eines Gasdruckdämpfers
Das bei starker Beanspruchung im Innern des Dämpfers aufschäumende Öl kann sich dann in die an der Seite integrierten Gasdruckzellen abkühlen, um die Dämpfung optimal weiter aufrecht zu erhalten**



RS5000 je 62,90 EURO

- Jeder Dämpfer besitzt eine 10fache Druckverteilung, um in jeder Situation adäquat zu reagieren, Twin Tube Kolben Design im Innern des Dämpferkörpers
- Hydrogen Gasdruckdämpfer
- einen gehärteten zweigeteilten Kolben von 35mm Durchmesser für extra Stabilität
- 10 fache Einstellung um Anpassung an jedwedes Gelände zu gewährleisten
- zusätzliche Schutzmanschetten des Kolbens mit im Lieferumfang



RS9000/RS999000 je 116,50 EURO

- verstärktes Dämpfergehäuse 70mm für Stabilität und verlängerte Lebensdauer
- 9fach manuell oder optional mit Kompressor einstellbare Härte mit Ritzel von aussen am Dämpfer (optimale Feinabstimmung) bspw bei Höherlegung
- 18mm Nitro Carbon Kolben für extra Stabilität
- verbesserter Nitrogen Gasdruckdämpfer für optimale Dämpfung
- Poly Buchsen gehärtet für verbesserte Absorption
- zusätzliche Schutzmanschetten des Kolbens mit im Lieferumfang

LISTE: RS5000

je

EUR: 62,90

NR	FAHRZEUGE	AUSFÜHRUNG in cm oben/unten
RS5112	CHEVY Blazer 2WD/4WD BJ 69-87, K-V, Sbrbn 1/2-3/4-1Ton BJ 67-91 DODGE Ram 1500 2WD BJ 94-01 FORD Expedition 4WD BJ 97-01, F-Truck 2WD/4WD BJ69-99 FORD Ranger 4WD BJ 98 GMC Jimmy 2WD/4WD BJ.69-87,K-V, Sbrbn 1/2-3/4-1Ton BJ 67-91	69/40,5 EB1/EB1
RS5116	CHEVY G-Van 1Ton BJ 70-95, K-V 1/2-3/4Ton BJ 86-87 DODGE B-Van 1Ton BJ 70-93, D-Model 1/2-3/4-1Ton BJ 70-93 DODGE Ramcharger 2WD BJ 72-93/4WD BJ 74-75, DODGE W-Model 1/2-3/4Ton BJ 61-71 FORD Bronco BJ 94-96, F-Truck 1/2-3/4TON 2WD BJ 81-96 FORD F- Truck 4WD 1/2-3/4-1TON BJ 80-96 GMC G-Van 1 Ton BJ 70-95 JEEP Wagoneer BJ 63-73/J Series Pick Up BJ 47-73 PLYMOUTH Trailduster 2WD BJ 72-78/4WD BJ 74-75 TOYOTA Landcruiser FJ BJ 64-80/T 100 Pick UP 93-94	63,00/37,60 EB1/EB1
RS5117	FORD Bronco BJ 81-96, E-Van 1/2TON, F-Truck 1/2-3/4TON 2WD 81-96 FORD F- Truck 4WD 1/2TON BJ 79-8, F-Truck 3/4TON BJ 81-96 FORD Ranger 4WD BJ 83-92 INTERNATIONAL Harvester, Scout BJ 71-81 NISSAN Patrol BJ 82 SUZUKI Samurai/SJ BJ 85-87	51,00/30,28 S1 / EB1
RS5119	DODGE D-Model 1Ton/W-Model 1Ton BJ 61-71 INTERNATIONAL Harvester, Scout BJ 61-71 JEEP CJ BJ 68-76/J Series Pick Up BJ 62-74, M Series BJ 41-75 SUZUKI Samurai/SJ BJ 78-88 TOYOTA Landcruiser BJ 78-88	47,20/29,70 EB1 / EB1
RS5123	CHEVY Blazer S10 4WD BJ 83-98/S10 PickUp 4WD BJ 83-94 GMC Jimmy S10 4WD BJ 83-98/Sonoma S10 4WD BJ 83-98 JEEP Wrangler YJ BJ 86-96 OLDSMOBILE Bravada 4WD BJ 91-93 SUZUKI Samurai/SJ BJ 82-90/Sanatana BJ 85-90	47,20/29,70 EB1 / EB1
LISTE	RS 5000	je EUR: 62,90

LISTE: RS5000

je

EUR: 62,90

NR	FAHRZEUGE	AUSFÜHRUNG in cm oben/unten
RS5124	CADILLAC Escalade BJ 99-00 CHEVY Blazer 4WD BJ 92-05/ Blazer S10 2/4WD BJ 83-94 CHEVY S10 PickUp 2/4WD BJ 82-98/G-20VAN BJ91 CHEVY Sbrbn 4WD BJ 92-99/Tahoe 2/4WD BJ 95-00 DODGE Dakota 4WD BJ 87-96 GMC Jimmy 2/4WD BJ 95-98/Jimmy S10 2/4WD BJ 83-94 GMC Sonoma BJ 92-04 /S15 PickUp 2/4WD BJ 83-98 GMC Sbrbn 4WD BJ 92-00/Yukon 2/4WD BJ 95-00 ISUZU Pick Up 2WD BJ 96-97 OLDSMOBILE Bravada 4WD BJ 91-93	62,53/ 37,60 BP8 / EB1
RS5128	CHEVY C1500/2500 BJ 88-99/K1500 BJ 88-98 CHEVY Sbrbn 2WD 1/2-3/4Ton BJ 92-99/Tahoe BJ 95-00 GMC C1500/2500 BJ 88-99/K1500 BJ 88-98 GMC Sbrbn 2WD 1/2-3/4Ton BJ 92-99/Yukon BJ 92-99 JEEP Cherokee BJ 94-01/Grd Cherokee BJ 93-04/Wagoneer BJ 84-90 JEEP Wrangler TJ BJ 97-06	54,35/ 32,44 S1 / BP7
RS5144	TOYOTA 4Runner BJ 84-85/Hi Lux Pick Up 4WD BJ 84-92 TOYOTA Landcruiser BJ 88-89/Tacoma BJ 95-98	58,15/ 35,60 EB2 / EB2
RS5152	CHEVY Astro Van 4WD BJ 90-98, Blazer 4WD BJ 92-94 CHEVY K-V, Sbrbn 1/2-3/4-1Ton BJ 88-99, Tahoe BJ 95-00 GMC Safari Van 4WD BJ 90-98, K-V, Sbrbn 1/2-3/4-1Ton BJ 88-99 GMC Yukon BJ 92-00	47,10 / 29,80 ES 76 / ES82
RS5156	DODGE Raider 4WD BJ 83-89 MITSUBISHI Pajero/Montero BJ 83-91	31,72 / 21,33 S1 / BP8
RS5166	CHEVY C1500/2500/3500 BJ 88-99/ Sbrbn 2WD 1/2-3/4Ton BJ 92-99 CHEVY Tahoe BJ 95-00 GMC C1500/2500/3500 BJ 88-99/Sbrbn 2WD 1/2-3/4Ton BJ 92-99 GMC Yukon BJ 92-99	36,32 / 23,90 S1 / BP7
RS5167	SUZUKI Samurai/SJ BJ 82-90/Sanatana BJ 85-90	40,10 / 25,80 S1 / EB1
RS5185	FORD Explorer 2WD/4WD BJ 91-03, Explorer Sportrac BJ 01-05 MAZDA Navajo 2WD/4WD BJ 81-94 MERCURY Mountaineer BJ 97- 01	68 / 40,5 BP8 / EB 1
RS5188	CHEVY K-V, Sbrbn 1/2Ton BJ 87 GMC K-V, Sbrbn 3/4Ton BJ 81-86 NISSAN Pick Up HI LUX 2WD/4WD BJ 86-94 /Frontier BJ 98-04 NISSAN X-Terra BJ 00-04	31,72 / 21,33 S1 / EB1
RS5190	CHEVY Blazer 4WD BJ 92-05/K-V, Sbrbn 1/2-3/4-1Ton BJ 88-99 CHEVY C1500/2500/3500 BJ 88-99/ Sbrbn 2WD 1/2-3/4Ton BJ 92-00 CHEVY S10 PickUp 4WD BJ 94-03, Tahoe 4WD BJ 95-00 GMC Jimmy 4WD BJ 95-05, K-V, Sbrbn 1/2-3/4-1Ton BJ 88-99 GMC C1500/2500/3500 BJ 88-99/ Sbrbn 2WD 1/2-3/4Ton BJ 92-00 GMC Sonoma S10 BJ 94-04, Yukon 4WD BJ 92-00	66,24 / 39,4 BP8 / ES34

LISTE	RS 5000 je	EUR: 61,90
--------------	-----------------------	-------------------

NR	FAHRZEUGE	AUSFÜHRUNG in cm oben/unten
----	-----------	--------------------------------

RS5202	NISSAN Patrol 4WD BJ 88-94	61,50/ 38,50 EB2 / EB2
RS5221	DODGE Ram 4WD Mega Cab 1/2-3/4-1Ton BJ 94-13	61,41/ 36,50 S50 / EB2
RS5229	FORD Explorer 2WD/4WD BJ 95-03/Explorer Sportrack BJ 01-05 FORD Ranger 4WD BJ 97-11 MAZDA B2500/3500 BJ 98-07 MERCURY Mountaineer BJ 97-01	58,15/ 35,60 EB2 / EB2
RS5240	JEEP Wrangler TJ BJ 97-06	49,70 / 31,00 BP18 / EB1

LISTE	RS 9000/RS999000	je	EUR: 109,50
--------------	-------------------------	-----------	--------------------

NR	FAHRZEUGE	AUSFÜHRUNG in cm oben/unten
----	-----------	--------------------------------

RS9113	CHEVY Blazer 4WD BJ 81-87 C-R 1/2-3/4 -1 Ton BJ. 63-72, CHEVY G-Van 1/2-3/4 Ton BJ 70-95, K-V 1/2-3/4Ton BJ 86-87 CHEVY Sbrbn 2WD 63-68/4WD BJ 81-91 DODGE B-Van 1/2-3/4-1Ton BJ 70-98, Ramcharger BJ 78-93 DODGE W-Truck 1/2-3/4TON BJ 75-78-1Ton BJ 65-93 FORD Bronco 4WD BJ78-79, F-Truck 1/2-3/4TON BJ 61-65 GMC Jimmy 4WD BJ 81-91, C-R 1/2-3/4 -1 Ton BJ. 63-72, GMC G-Van 1/2-3/4 Ton BJ 70-95 K-V 1/2-3/4Ton 4WD BJ 86-87 GMC Sbrbn 2WD 63-68/4WD BJ 81-91 INTERNATIONAL Scout BJ 71 JEEP CJ 2WD/4WD BJ 68-76/Grnd Wagoneer BJ 84-91/Wagone BJ63-89 JEEP J Series Pick Up BJ 74-86, M Series BJ 41-68 MITSUBISHI Pick Up 2WD BJ 79-94 NISSAN Pick Up 2WD BJ 86-95/4WD BJ 83-96 PLYMOUTH PB Van 1/2-3/4-1Ton BJ 70-83, Trailduster 4WD BJ 78-83 SUZUKI Samurai/SJ BJ 85-87 TOYOTA Landcruiser FJ BJ 64-80	52,80/32,5 EB1/EB1
--------	--	---------------------------

LISTE	RS 9000/RS999000	je	EUR: 109,50
NR	FAHRZEUGE		AUSFÜHRUNG in cm oben/unten
RS9118	CHEVY Blazer 4WD BJ 69-91, C-R 1/2-3/4Ton BJ 69-86, CHEVY G-Van 1/2-3/4Ton BJ 69-90, K-V 1/2-3/4Ton BJ 86-86 CHEVY G-Van 1/2-3/4 Ton BJ 70-95,Sbrbn 2WD 69-87/4WD BJ 81-91 CHEVY S10 Pick Up 4WD BJ 83-93 DODGE W-Truck 1/2-3/4TON BJ 61-71 FORD Bronco 4WD BJ 66-96, F-Truck 4WD 1/2-3/4TON BJ 65-76 FORD F-Truck 2WD 1/2TON BJ 80-96 GMC Jimmy 4WD BJ 69-91, C-R 1/2-3/4Ton BJ 73-91 GMC G-Van 1/2-3/4 Ton BJ 64-90, K-V 1/2-3/4Ton BJ 69-87 GMC Sbrbn 2WD 63-72/4WD BJ 73-91 INTERNATIONAL Scout BJ 72-81 JEEP CJ 4WD BJ 76-86, Wagoneer BJ63-89,Wrangler BJ 86-96 JEEP J Series Pick UpBJ 74-86, Commanche BJ 86-92, Grd Wag BJ84-91 MITSUBISHI Pick Up 4WD BJ 83-94, Pajero BJ 83-94 NISSAN Pick Up 2WD BJ 86-95/4WD BJ 86-95, Terrano 2WD BJ 86- NISSAN Terrano 2WD BJ 86 93/4WD BJ 86-95 NISSAN Patrol BJ 86-93, Pathfinder BJ 86-93 TOYOTA Landcruiser BJ 64-89	58,00 / 35,40 EB 1/ EB 1	
RS9128	CHEVY C1500/2500 BJ 88-99/K1500 BJ 88-98 CHEVY Sbrbn 2WD 1/2-3/4Ton BJ 92-99/Tahoe BJ 95-00 GMC C1500/2500 BJ 88-99/K1500 BJ 88-98 GMC Sbrbn 2WD 1/2-3/4Ton BJ 92-99,Yukon BJ 92-99 JEEP Cherokee BJ 94-01/Grd Cherokee BJ 93-04/Wagoneer BJ 84-90 JEEP Wrangler TJ BJ 97-06	54,35/ 32,44 S1 / BP7	
RS9129	JEEP Cherokee BJ 94-01/Grd Cherokee BJ 93-04/Wagoneer BJ 84-90 JEEP Wrangler TJ BJ 97-06	52,00 / 32,33 BP18 / EB1	
RS9168	JEEP Wrangler YJ BJ87-95	65,50/ 38,50 S1 /ES25	

LENKUNGSDÄMPFER besser als ORIGINAL ÖL/Gasdruck



RS5000 je 67,50 EURO

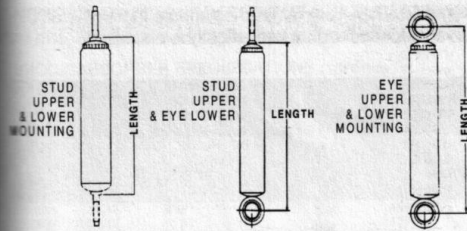
- ➔ Jeder Dämpfer besitzt eine 10fache Druckverteilung, um in jeder Situation adäquat zu reagieren, Twin Tube Kolben Design im Innern des Dämpferkörpers
- ➔ Hydrogen Gasdruckdämpfer
- ➔ einen gehärteten zweigeteilten Kolben von 35mm Durchmesser für extra Stabilität
- ➔ 10 fache Einstellung um Anpassung an jedwedem Gelände zu gewährleisten
- ➔ zusätzliche Schutzmanschetten des Kolbens mit im Lieferumfang

LISTE	RS 5400	je	EUR: 67,50
NR	FAHRZEUGE		AUSFÜHRUNG in cm oben/unten
RS5401	<p>CHEVY Blazer 4WD BJ 92-00, K-V, Sbrbn 1/2-3/4Ton BJ 88-98 CHEVY K3500-1Ton BJ 88-00, Tahoe BJ 95-00 CHEVY S10 Blazer BJ 83-94, S10 Pick Up 4WD BJ 83-04 FORD Expedition 4WD BJ 97-02, F-Truck ½ – ¾ Ton 4WD BJ 97-03 FORD F150 Heritage 4WD BJ 04 GMC Jimmy 4WD BJ 92-00, K-V, Sbrbn 1/2-3/4Ton BJ 88-98 GMC K3500-1Ton BJ 88-00, Yukon BJ 95-00 GMC S10 Jimmy BJ 83-91, S10 Pick Up 4WD BJ 83-90, Sonoma BJ-04 ISUZU Amigo BJ 89-94, Opel Fronterra Sport BJ 89-94 JEEP Cherokee 4WD BJ 87-01,Commanche BJ 86-92 JEEP Grd CherokeeBJ 93-98,Wrangler TJ BJ 07-15 OLDSMOBILE Bravada 4WD BJ 91-97</p>		
RS5402	<p>CHEVY Avalanche 1500 4WD BJ 02-06, Blazer 4WD BJ 71-91 CHEVY C30 BJ 67-86, G10 BJ 65-71, K-V, Sbrbn 1/2-3/4Ton BJ 68-86 CHEVY Silverado 1500 BJ 99-07, Sbrbn 1500 BJ 00-06, CHEVY Sbrbn 3/4Ton BJ 00-01, Tahoe BJ 00-06 DODGE B-Van 1Ton BJ 70-93, D-Model 1/2-3/4-1Ton BJ 70-93 DODGE Ramcharger 4WD BJ 74-93,D100/200/300 BJ 57-71 DODGE W100 BJ 60-89,W150 BJ 77-93, W200/300 BJ 60-80 DODGE, W250/W350 BJ 81-93 FORD Bronco 4WD BJ 78-96, Bronco II BJ 84-90, E100/200 BJ 68 FORD Econoline BJ 61-67, Explorer BJ 91-94, F100 BJ 75-83 FORD F150 BJ 76-96, F250/350 BJ 80-96, Ranger BJ 83-97 GMC Jimmy 4WD BJ 70-91,G10/15 BJ 67-71,K15/Sbrbn BJ 75-78 GMC K-V 1500/Sbrbn BJ 79-86, K25 BJ 79-86 Yukon BJ 00-06 GMC S10 Jimmy BJ 83-91, S10 Pick Up 4WD BJ 83-90, GMC Sonoma BJ-91-97, Sierra 1500 BJ 99-07 INTERNATIONAL Scout BJ 61-68 ISUZU Pick Up BJ 89-91, Trooper BJ 84-90 JEEP CJ5, CJ6 BJ 60-83, CJ7 BJ 76-86, Commando,Jeepster BJ 66-73 JEEP Scrambler BJ 81-85,Willys BJ 47-58</p>		

LISTE	RS 5400	je	EUR: 67,50
NR	FAHRZEUGE	AUSFÜHRUNG in cm oben/unten	
RS5402	MAZDA B2500/3000 BJ 94-97, Navajo BJ 91-94 MITSUBISHI Pajero BJ 86-95 NISSAN MD720 BJ 80-82, D21 PU BJ 86-94, Frontier/Navarra BJ 00-02 NISSAN X-Terra 4WD BJ 00-04 SUZUKI Samurai,SJ BJ 85-90 TOYOTA 4Runner BJ 86-93, Land Cruiser BJ 60-84, TOYOTA HiLux PU 4WD BJ 79-92, T100 BJ 93-96		
RS5404	CHEVY Blazer 4WD BJ 73-91, K-V, Sbrbn 1/2-3/4Ton BJ 73-91 CHEVY K-V3500-1Ton BJ 79-91 CHEVY S10 Blazer BJ 83-94, S10 Pick Up 4WD BJ 83-04 DODGE Ram 1500/2500/3500 BJ 94-99 FORD Bronco BJ 66-69 GMC Jimmy 4WD BJ 73-91, K-V, Sbrbn 1/2-3/4Ton BJ 73-91 GMC K-V3500-1Ton BJ 88-00, Yukon BJ 95-00 GMC S10 Jimmy BJ 79-91 JEEP J10/J20 BJ 74-86, Wagoneer BJ 75-90 TOYOTA Landcruiser BJ 86-94		
RS5407	CHEVY Avalanche 1500 4WD BJ 02-07, Silverado 1500 4WD BJ 01-07 CHEVY Silverado 2500 4WD BJ 99-08 Silverado 3500 4WD BJ 07-08 CHEVY Surburban 2500 BJ 00-02 GMC Sierra 1500 4WD BJ 02-07, Sierra 2500 BJ 02-08, GMC Sierra 3500 BJ 07-08, Yukon 2500 BJ 02-06 HUMMER H2 BJ 03-09 JEEP Wrangler BJ 87-09		
RS5409	JEEP Grand Cherokee BJ 99-04		
RS5412	DODGE RAM 1500/2500 BJ 00-08, 3500 BJ 00-10		

SPECIFICATIONS

All listed specifications are for convenience only and are subject to change without notice. Specifications are not intended for design of custom applications.



"S" MOUNTING CODE

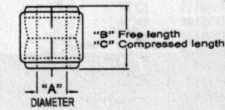
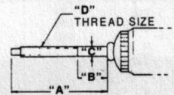
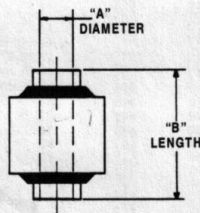
CODE	A	B	C	D
S1	2.37	0.88	3/8	3/8-24
S2	2.18	1.03	3/8	3/8-24
S6	2.59	1.48	7/16	3/8-24
S20	2.68	1.38	3/8	3/8-24
S50	3.25	1.43	1/2	1/2-20
S51	2.79	1.16	5/8	5/8-18

"EB" MOUNTING CODE — EYERING AND BUSHING

CODE	A	B	C
EB1	5/8	1.44	1.25
EB2	3/4	1.62	
EB4	11/16	1.72	1.55
EB6	5/8		w/ 1/2"-20 stud
EB7	5/8		w/ 5/8"-18 stud

"ES" MOUNTING CODE — EYERING AND BUSHING WITH STEEL SLEEVE

CODE	A	B
ES2	10MM	1.42
ES10	7/16	1.38
ES17	12MM	1.25
ES18	12MM	1.65
ES23	1/2	1.31
ES24	1/2	1.38
ES25	1/2	1.50
ES27	1/2	1.62
ES31	1/2	2.25
ES34	9/16	1.66
ES36	3/4	1.75
ES53	10MM	1.38
ES55	12MM	1.56
ES65	12MM	1.38
ES76	12MM	2.44
ES82	1/2	1.67
ES84	10MM	1.62
ES91	1/2	2.10
ES110	16MM	1.61
ES113	16MM	1.49
ES124	16MM	2.28
ES153	7/16	1.50



NOTES:

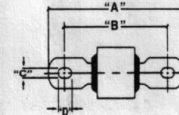
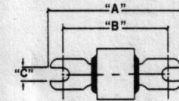
Many shocks come with a sleeve kit to reduce 5/8" rubber bushing eye to 9/16" and 1/2" allowing multiple vehicle application. All mounting code dimensions are approximate, and subject to revision without notice.

RS5000 shocks are 1-3/8" bore.

RS5600 shocks are 1-3/16" bore.

"BP" MOUNTING CODE — EYERING AND BUSHING WITH BAR PIN

CODE	A	B	C	D
BP4	3.18	2.35	0.33	-
BP5	2.72	2.30	0.35	-
BP7	3.13	2.50	0.35	0.42
BP8	3.50	2.87	0.35	0.42
BP13	3.45	3.00	0.33	-
BP18	3.78	3.14	0.39	-



STABILIZER SHOCK SPECIFICATIONS

PART NUMBER	RS5000	LENGTH		MOUNTING	
		EXTENDED	COLLAPSED	UPPER	LOWER
RS97327	5401	19.26	12.17	EB	EB1
RS91121	5402	20.11	11.86	S1	S2
RS91122	5403	22.36	12.99	EB	EB1
RS91123	5404	23.92	14.30	S1	EB1
RS91124	5405	21.30	12.60	S1	S1
RS91127	-	25.12	14.61	S1	S1
RS99900	-	30.17	17.54	EB1	EB1
-	5407	19.60	11.80	EB1	EB1